



I-MOVE

Mobile multimedia Tables

waveinside.com

WAVE
INSIDE
NEVER STOP EVOLVING

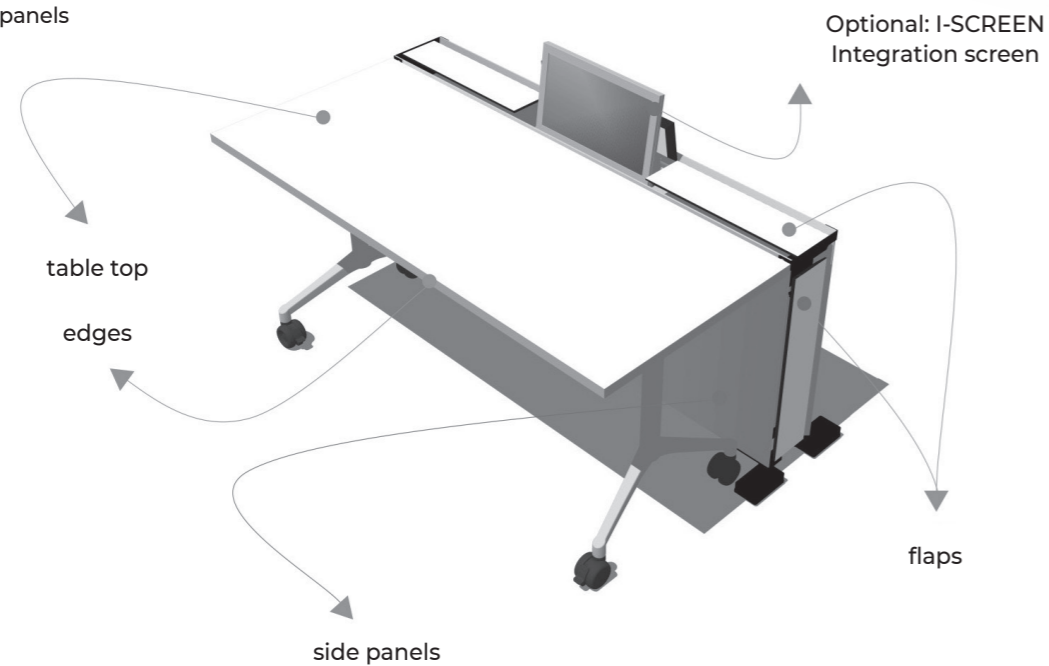
I-MOVE

a world in motion

Scan the QR to find out
the different finishes available



- table top, edges
- flaps
- side panels



I-MOVE

It adapts to all the needs of
a world on the move

A furniture program designed for different communication spaces, I-MOVE combines ingenuity, technique and aesthetics.

As agile as today's companies, I-MOVE consists of independent, linkable modules and matching folding tables. The combination of the various elements has been perfectly thought through. Connectors are adapted to every need, and an integrated motorized screen is available as an option. Compact and mobile, it can be stored or reconfigured in just a few minutes.

A system that offers multiple
and effective utilization of space.



WAVE
INSIDE

Configuration examples

I-MOVE



Square-shaped

Capacity: 24 people
8 modules with integrated screen,
8 folding tables and 4 square tables.



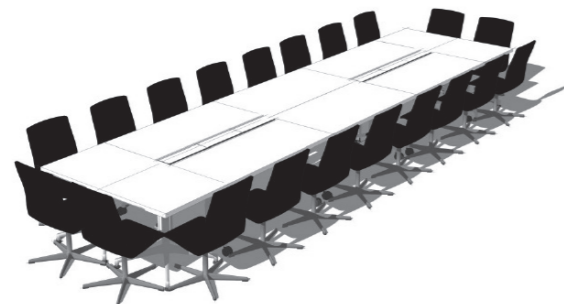
U-shaped

Capacity: 28 people
14 folding tables and
2 square tables.



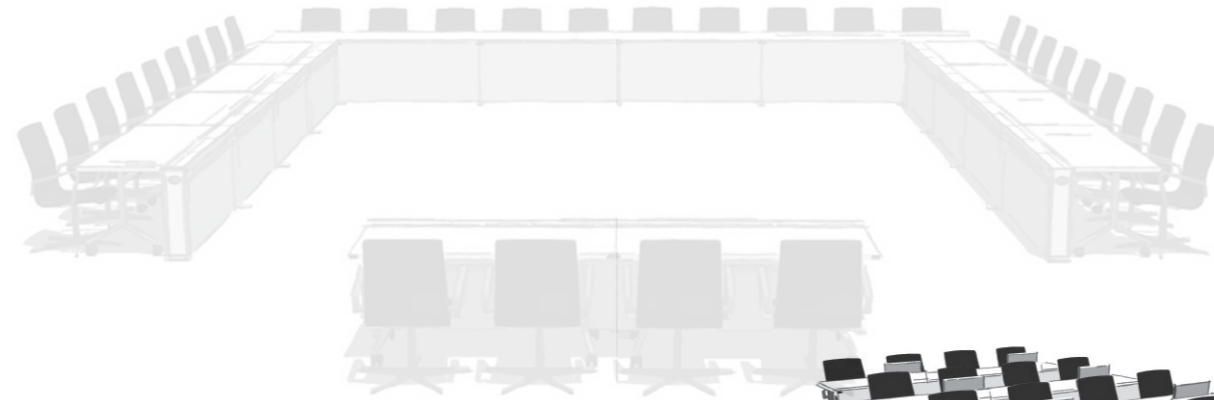
Rectangle-shaped

Capacity: 24 people
8 modules with integrated screen,
8 folding tables and 4 square tables.



Rectangle-shaped without screen

Capacity: 24 people
2 technical modules, 4 folding tables,
2 central folding tables, 4 square tables.



Configuration examples

I-MOVE



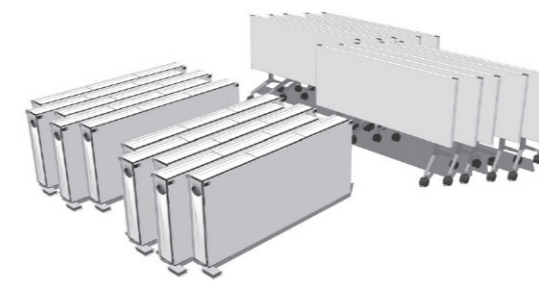
In rows

Capacity: 16 people
8 modules with integrated screen,
8 folding tables.



In junction

Capacity: 20 people
11 module and 2 tables,
2 I-WORK tables, to form
a single unique meeting table.



Storage

Modules and tables can be folded
and stored in just a few minutes.



Reception mode

The modules remain stored,
but the separate tables are used
for recreational purposes.



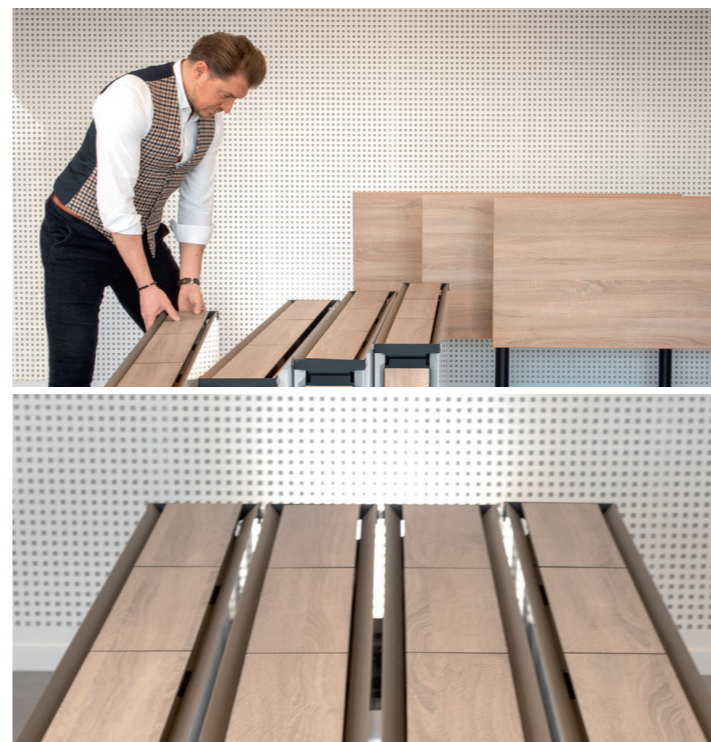
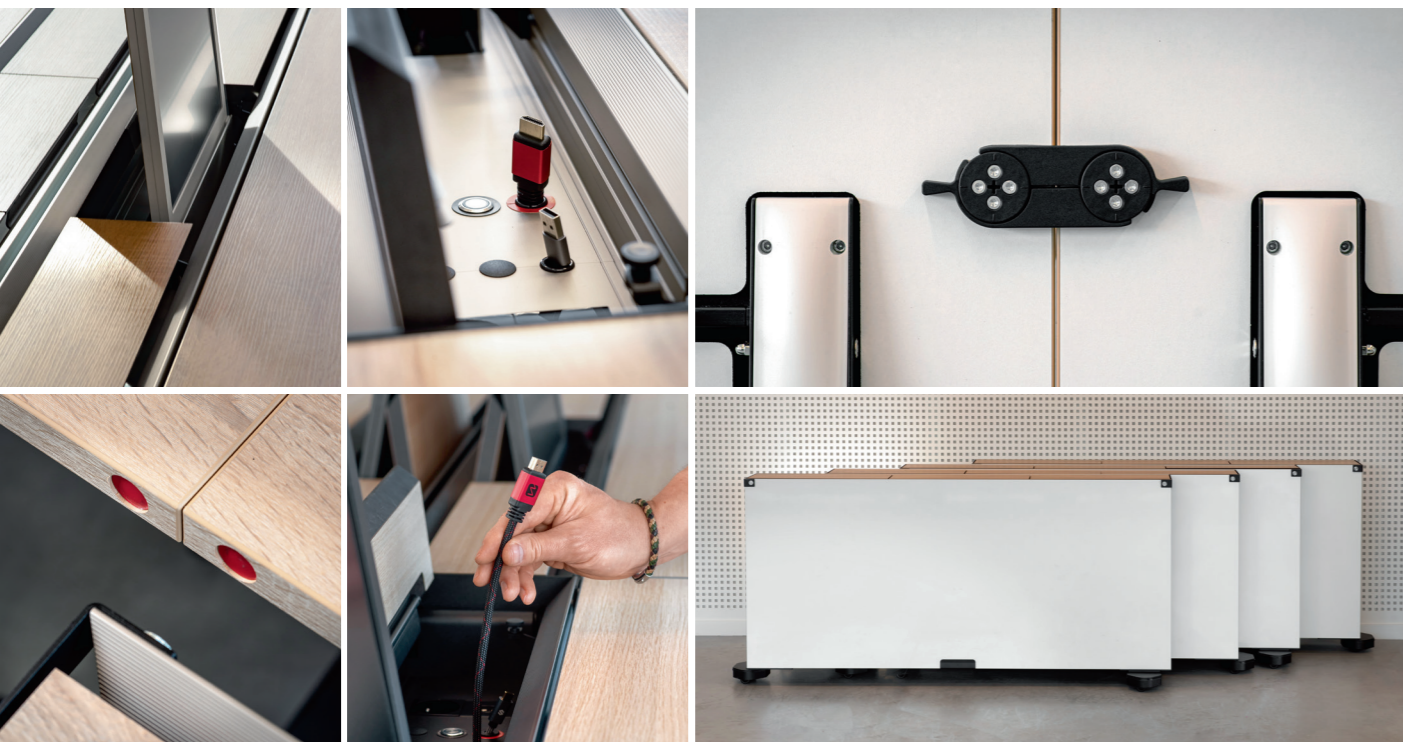
Self Adapting

Adapting to change
Adapting to requirements
Adapting to the unexpected

I-MOVE

As mobile as today's minds

Presentations, conferences, small-group workshops, training courses, receptions... today's professional spaces must meet the imperatives of connectivity, flexibility and efficiency. With its invisible castors, folding tables and wide range of configurations and finishes, I-MOVE reflects the spirit of today: mobile and ultra-versatile.



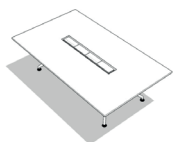
WAVE
INSIDE

LET'S GET PHYGITAL!

Whether face-to-face or virtually, sitting down together around a table will always be at the heart of professional relations. That's why **WAVEinside** creates high-performance, tailor-made meeting solutions. Without technical or aesthetic limits. Around our avProfile™ technical tray, a truly modular and scalable backbone, **WAVEinside** is connected to your needs of today and tomorrow with regard to meeting rooms and other spaces for communication.

Since its creation, **WAVEinside** has favored in-house production 'Made in Belgium', responsible use of materials and resources, and circular design. This is our way of guaranteeing, from start to finish, the highest quality of our creations and their sustainability in every respect.

A modular and evolutive solution for every need



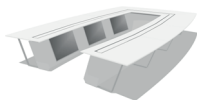
I-WORK

Plug & Play Meeting table



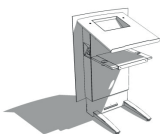
I-SEE

Plug & Play videoconference table



I-DECIDE

Outstanding tables for boardrooms



I-AM

Multimedia lectern



E-MOOD

Collaborative acoustic furniture

Our solutions are highly customizable.

Please do not hesitate to contact us if you have any questions or if you would like a demonstration.

WAVEinside Belgium

Rue de l'Athénée, 2
B-4130 Esneux
tel. +32 4 383 55 13

WAVEinside Luxemburg

Rue des Champs, 30
L-8285 Kehlen
tel. +352 20 21 15 73