

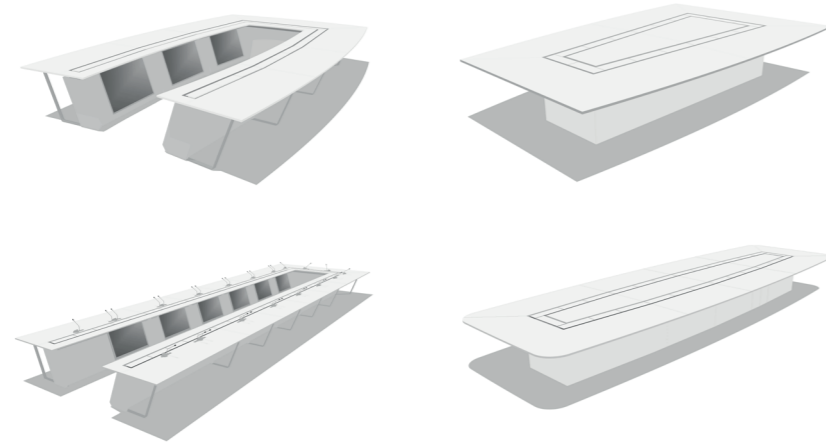


I-DECIDE

Outstanding Tables
for Boardrooms

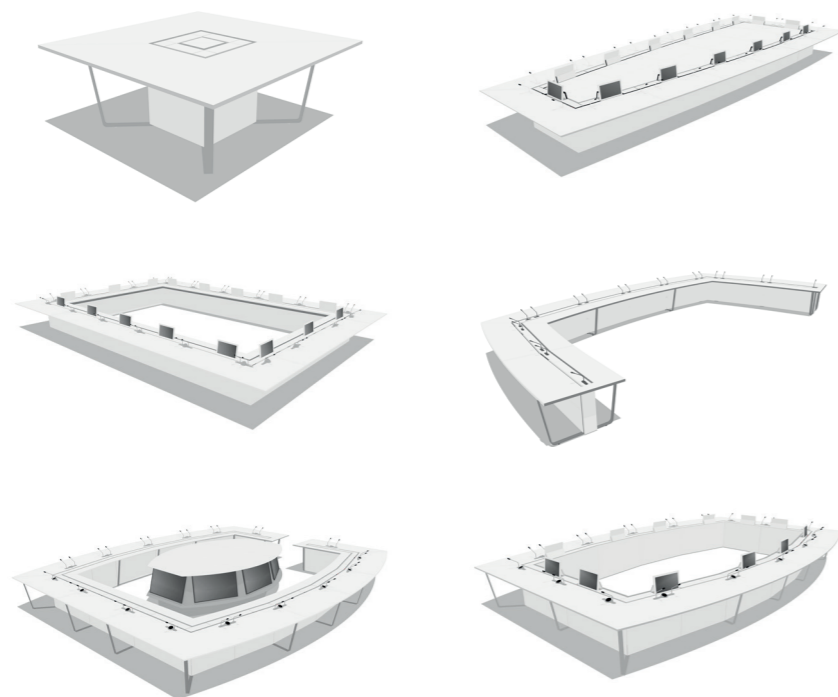
Configuration examples

I-DECIDE



Designing around our ingenious avProfile™ allows us to offer shapes, sizes and configurations to suit every space and every use with I-DECIDE. Sound and image seamlessly integrated to suit your needs.

Built from an aluminum chassis for its strength, lightness and circular construction, I-DECIDE is also designed to absorb any vibrations and noise generated by electrical mechanisms.



I-DECIDE

Outstanding quality and technology

I-DECIDE offers you a tailor-made solution thanks to the unique concept of our technical profile. Multimedia, motorized screens, voting systems, conference systems, simultaneous translation, prestigious aesthetic finishes of your choice... I-DECIDE is as intuitive as it is evolutive for superior user comfort and optimal durability.

The perfect table that meets today's requirements and is ready for the future.



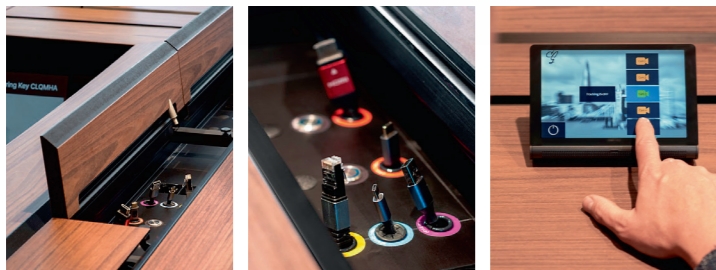
I-DECIDE

avProfile™, a model of integration

This technological tray, designed and created by Waveinside, offers an unprecedented level of technology integration and modularity. As the backbone of the modular structure of our solutions, it provides each user with unique simplicity and working comfort.

Everything, always accessible to everyone

The avProfile™ tray equips all our tables. This ensures that power supplies and connectors are within easy reach of all participants (HDMI, USB-C, Network...). In addition, cables are extractable for greater comfort and reliability.



A clear desk and a clear mind

When the various devices are connected, the flaps close and the workspace is completely clear. Transformers and connectors are protected in the avProfile™ sheath.

Show-Me': just a click away

When a participant wants to speak and share his or her presentation on a screen, simply press the Show-Me button.

An access as easy as sustainable

- Removable panels on both sides of the table base provide easy access to technical equipments.
- Cable management from the floor to the avProfile™ tray is perfectly organized.
- The base is designed for easy integration of racks.
- The base has been designed for the natural ventilation of equipment.

Unplanned Obsolescence

The evolutionary design of the avProfile™ technical tray makes it sustainable. The addition or modification of connectors, or other technological systems (Update) is always possible and feasible on site, and this, without the need to change tables.





Deciding

Deciding together
Deciding to move forward
Deciding to look long-term

I-DECIDE

The table is as important as the decisions made around it.

Your boardroom table welcomes your customers and privileged partners. It is at the heart of the decisions you make together, with them, and with your staff. With I-DECIDE, we have created a solution to meet your specific and personal needs: rectangular, rectangular, square, U-shaped, oblong... you decide the shape, finishes and integrated technologies.

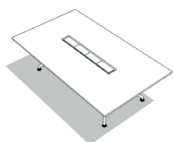


LET'S GET PHYGITAL !

Whether face-to-face or virtually, sitting down together around a table will always be at the heart of professional relations. That's why **WAVEinside** creates high-performance, tailor-made meeting solutions. Without technical or aesthetic limits. Around our avProfile™ technical tray, a truly modular and scalable backbone, **WAVEinside** is connected to your needs of today and tomorrow with regard to meeting rooms and other spaces for communication.

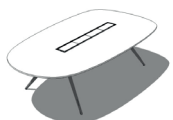
Since its creation, **WAVEinside** has favored in-house production 'Made in Belgium', responsible use of materials and resources, and circular design. This is our way of guaranteeing, from start to finish, the highest quality of our creations and their sustainability in every respect.

A modular and evolutive solution for every need



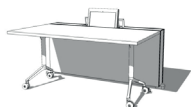
I-WORK

Plug & Play Meeting table



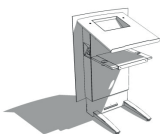
I-SEE

Plug & Play videoconference table



I-MOVE

Mobile multimedia Tables



I-AM

Multimedia lectern



E-MOOD

Collaborative acoustic furniture

Our solutions are highly customizable.

Please do not hesitate to contact us if you have any questions or if you would like a demonstration.

WAVEinside Belgium

Rue de l'Athénée, 2
B-4130 Esneux
tel. +32 4 383 55 13

WAVEinside Luxemburg

Rue des Champs, 30
L-8285 Kehlen
tel. +352 20 21 15 73