

CLT | 科伦特

Commercial LED Display System Integration Provider



LM PRO FINE PITCH SOLUTION



Contents

1

Introduction

2

Installation & maintenance

3

Application

4

Specification



L091M Pro L121M Pro L151M Pro L181M Pro L251M Pro

Pixel pitch(mm):0.9375 1.25 1.56 1.875 2.5

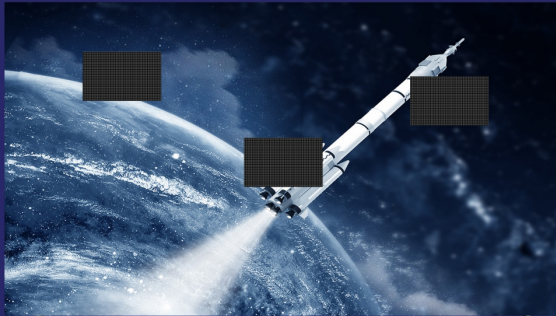




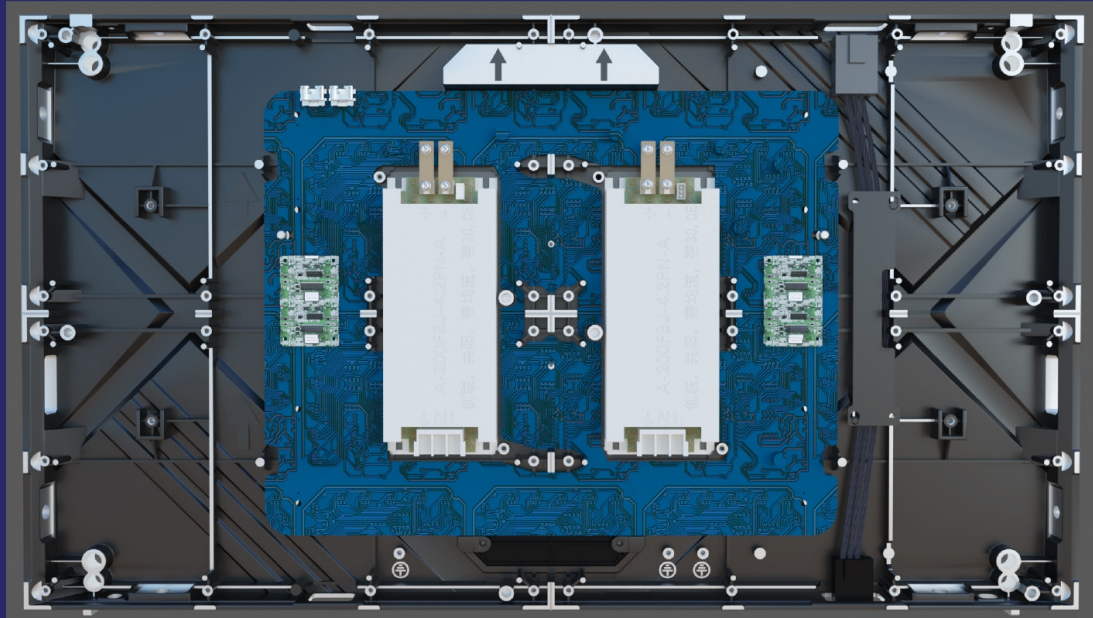
Before

After

Auto Calibration
Better Visual Effect



Intelligent module design, automatically read and upload screen calibration data,
can ensure the consistency of the screen after the module replaced,
bringing a better user experience



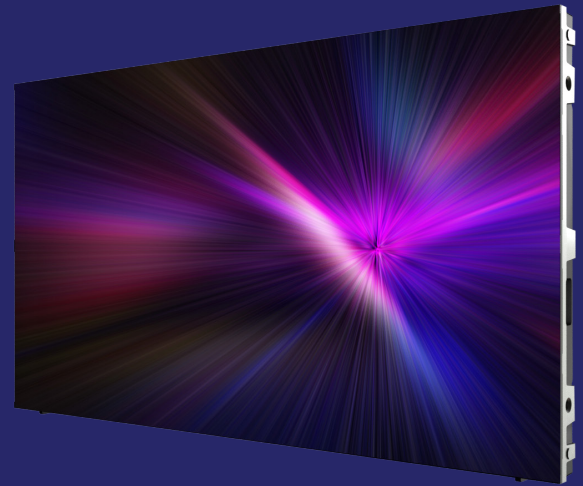
Redundant power & system optional design

Double guarantee & Never black screen

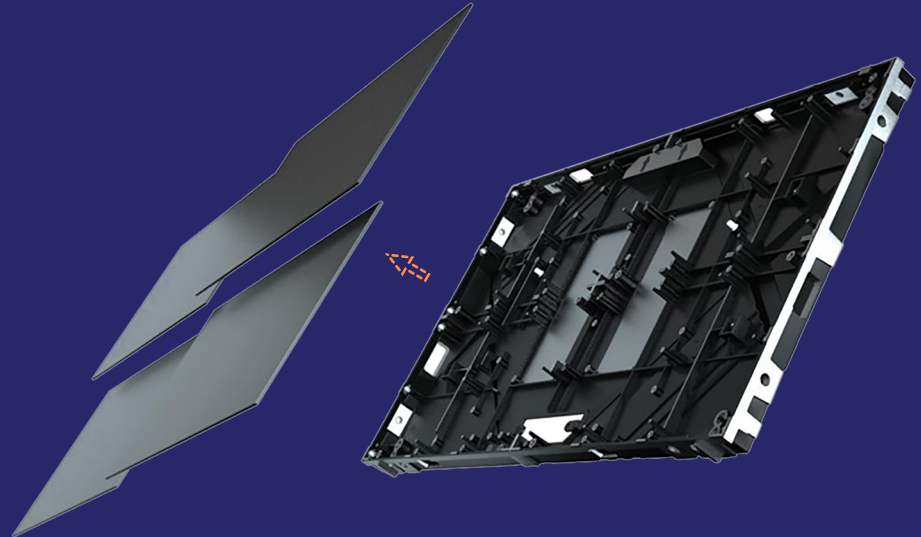
Full Front service



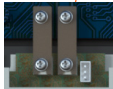
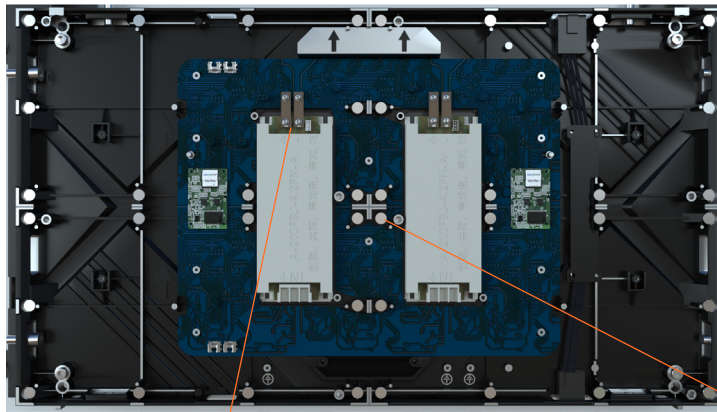
Vacuum suction tool



Fast & Efficient



Super-strong magnetic installation,
seamless splicing, more efficient and safer



Strong & reliable conduction copper



40pcs Strong magnets
per cabinet



wireless cable design, power supply adopts high elasticity
and large-area copper sheet for conduction.
The security far exceeds the traditional cables.

➤ Ultra slim & super light weight, easy to install



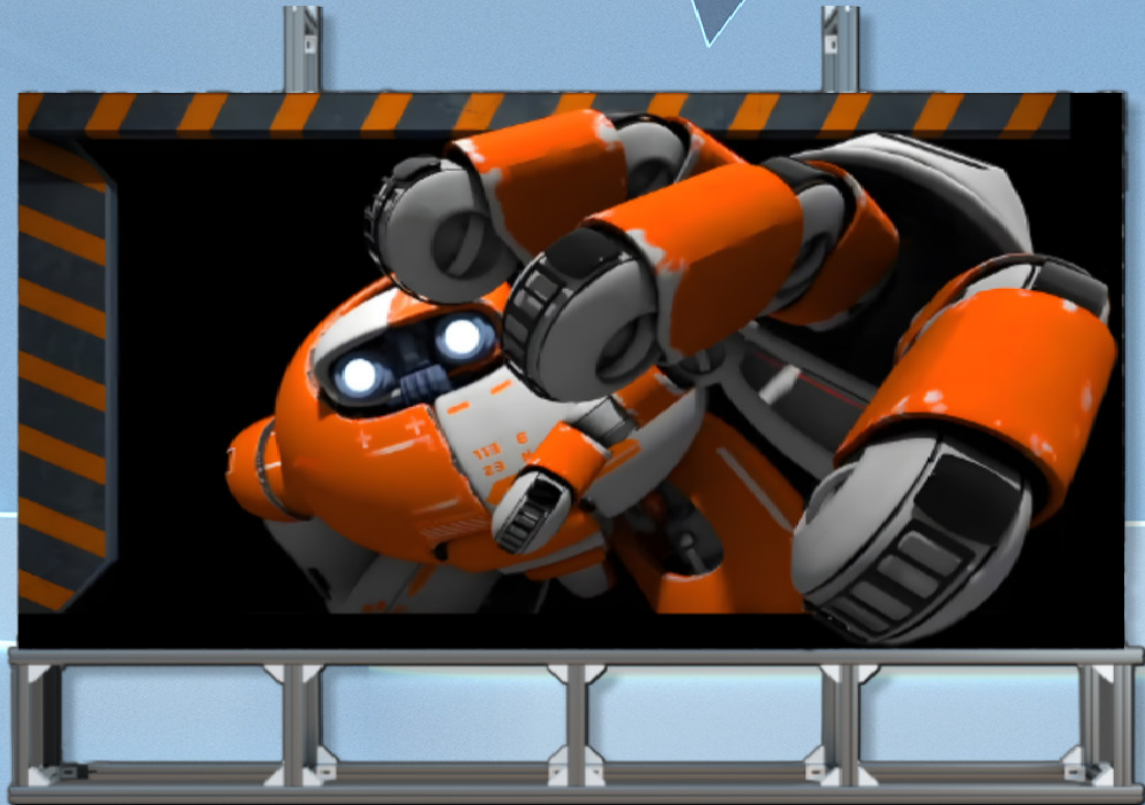
CNC technology with high precision cabinet design
Ultra light weight only 4kg/cabinet



Wall-mounted 90°
right-angle
installation



Wall-mounted installation



Stacking installation



Meeting room/ Training room



Command center/Monitoring room

Main Banner Title

Digital Technology Modern Solution !

Lorem ipsum dolor sit amet, consectetur
adipiscing elit, sed do eiusmod tempor



Transportation railway / Shopping mall

Specification

Parameter	L091M Pro	L121M Pro	L151M Pro	L181M Pro	L251M Pro
Pixel Pitch (mm)	0.9375	1.25	1.56	1.875	2.5
Pixel Density (dots/m ²)	1137777	640000	409600	284444	160000
Total Size (mm)	600*337.5*28				
Panel Material	Die-casting Aluminum				
Weight (kg)	4.1				
Grayscale(Bit)	14				
Refresh Rate (Hz)	2880-3840				
Brightenss(nits)	450	450	450	600	800
Viewing Angle (H°/V°)	160°/140°				
AC Input Voltage (V)	AC110-240±10%				
AC Input Frequency (Hz)	50/60				
Max. Power Consumption (W/m ²)	650	570	540	560	520
Avg. power consumption (W/m ²)	220	200	175	180	175
IP Rating (IP)	IP30				
Installation / Maintenance	Front & Back installation / Front maintenance				

Parameters will be changed without notice

Website



Facebook



Shenzhen CLT Electronics Co., LTD

Website: www.cltchina.com

Email: marketing@cltchina.com